

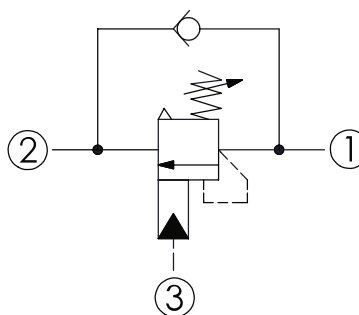
# CCA-2A - Counterbalance valve

Vented, atmospherically referenced, 420 bar maximum setting

## 1 Available versions

Ordering example:

CCA-2A	-3B	-F	-L
Type	Pilot ratio	Spring	Option



- 1 Load
- 2 Valve
- 3 Pilot

### Pilot ratio

Coding	Description
3B	2 : 1 (with sealed pilot)
3E	5 : 1 (with sealed pilot)

### Spring

Coding	Pressure (bar)	
	Adjustment range (1.7 bar cracking pressure)	Standard setting
F	70 - 175	140
G	140 - 420	280

### Option

Coding	Option	Drawing
L	Leakproof hex. socket screw	
C	Stainless steel tamper resistant cover	
CB	Plastic tamper resistant cover	

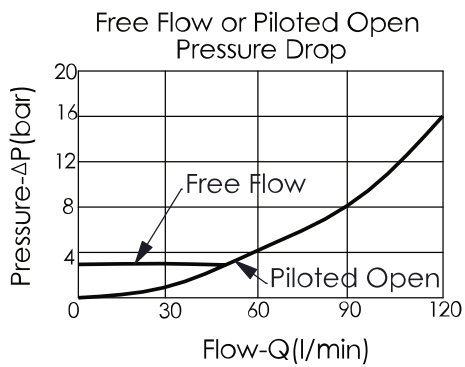
## 2 Technical data

Operating pressure $p_{\max}$	420 bar
Flow rate $Q_{\max}$	120 l/min
Installation torque	60 - 70 Nm
Cavity	T-2A
Weight	0.36 kg

### **i** INFORMATION

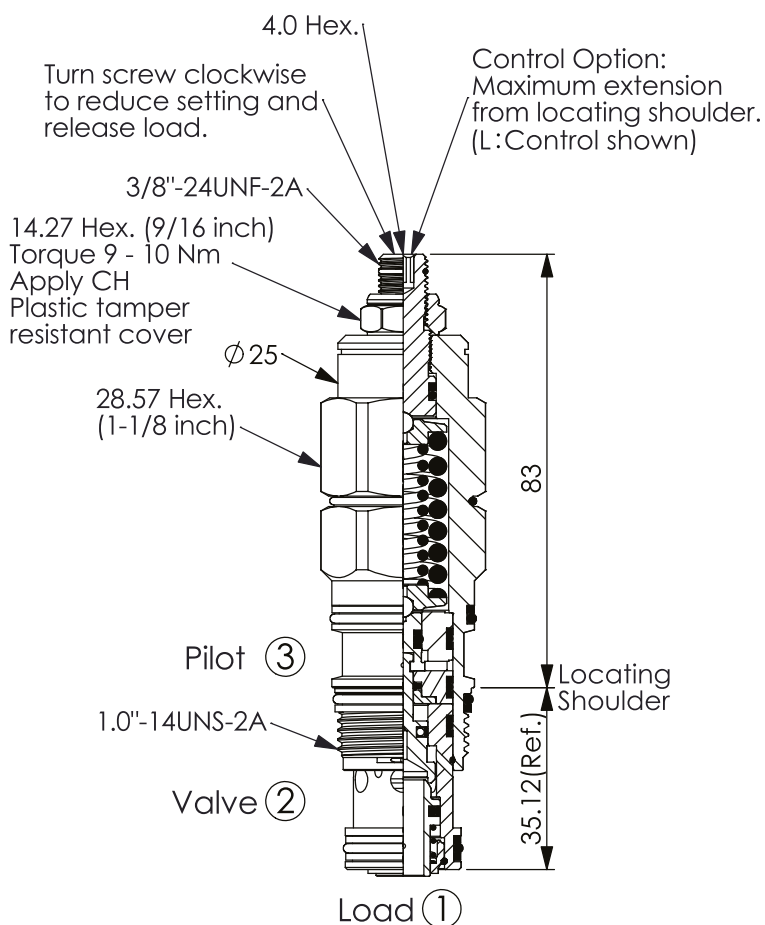
- Pressure setting: Setting should be 1.3 times maximum load induced pressure. (We suggest when the max. setting pressure is 420 bar, the load pressure has to be lower than 320 bar.)
- Approximately 1 drop (0.07 cm<sup>3</sup>) of fluid will pass from the pilot area to the vented spring chamber every 4000 cycles.

### Characteristic lines



### 3 Dimensions

All dimensions in mm, subject to change.



### 4 Other information

see [Technical information HAWE cartridge valves: D 8219](#)

see [Recommendation for hydraulic fluid: D 5488/1](#)

